

ANCHOR POST HL 709-01, HL709-02, ADAPTER HL 710

INSPECTIONS

1. Before each use a visual inspection should be carried out by the user to ensure that the anchor point is in good condition, and marking label is legible.
2. It is recommended that the HL709 anchor point is periodically inspected every 12 month after installation. The periodic inspection must be carried out by a qualified person. The result of inspection must be recorded in the Operational Sheet.
3. During the inspections any mechanical, chemical or thermal defects (cracks, deformation or corrosion) should be taken into account.
4. When the anchor point was engaged in fall arresting than it should be replaced with new one or submitted under detailed inspection carried out by qualified technician. The result of inspection should be recorded in the Operational Sheet.
5. BANANA Post can be used lifetime but only if annual inspections are made.
6. BANANA Post was tested against EN795 class A1 standard and is appropriate for single person use with energy absorber conformed with EN355 standard.
7. In case of any doubt please contact with producer or its authorised representatives.

OPERATIONAL SHEET

Device name	Reference number	User name
Date of manufacture	Serial number	Date of installation

TECHNICAL INSPECTIONS

Date of insp.	Type of inspection (periodical/special/...)	Result	Next inspection date	Signature of the person responsible

Producer:
 PROTEKT, 93-403 Łódź, ul.: Starorudzka 9, tel.: (+48 42) 680 20 93,
 fax.: (+48 42) 680 20 93, e-mail: protekt@protekt.com.pl

PROTEKT

ANCHOR POST HL 709-01, HL709-02, ADAPTER HL 710

PRODUCT DESCRIPTION

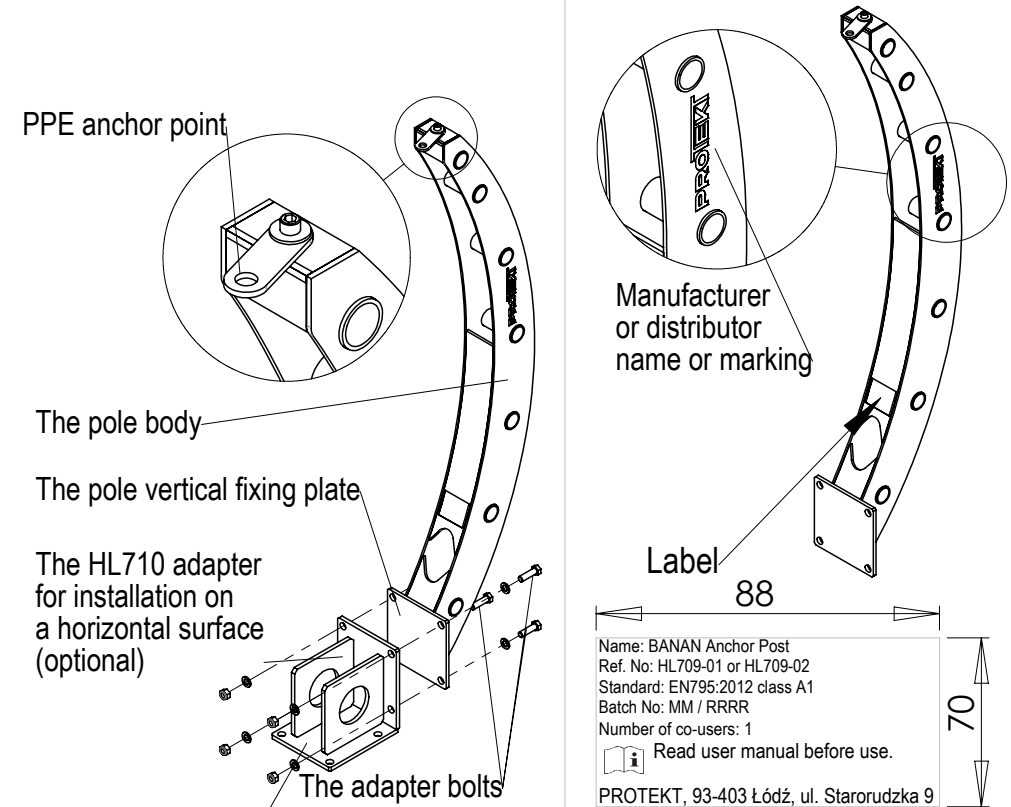
BANANA anchor post HL 709 is an anchorage device class A1, conform to the EN795: 2012 standard. It is designed for connecting a PPE system against fall from a height to a fixed construction.

The HL 709 anchor post may be utilised by single user.

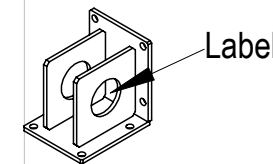
The HL 709 is made of alluminium alloy (ref. HL 709 01) or hot dip galvanized steel (ref. HL 709 02).

The HL 709 anchorage point is intended for installation on a vertical, horizontal or inclined surface. It can be fasten to a fixed structure directly or with the aid of the HL 710 adapter which allows to fit the pole to horizontal surfaces.

MARKING



The pole horizontal fixing plate



PROTEKT

ANCHOR POST HL 709-01, HL709-02, ADAPTER HL 710

ESSENTIAL RULES OF APPLICATION

1. This manual must be read before installation of the product and before using as well. The instruction must be followed.
2. This instruction manual must be kept available to all users. Additional copies can be delivered on request by producer or distributor.
3. The HL709 anchor post can be applied for attaching PPE against falls from a height conform to the Directive 89/686/EU. The fall protection system must be in accordance to EN363, EN358 or EN795 standard.
4. Personal protective equipment in association of the HL709 mastn't be used by people whose health condition may influence their safety during normal use or emergency procedures.
5. Rules of attaching the fall protection system must be conform to EN363 standard and standards of applied equipment (e.g. EN354/355 - safety lanyards and energy abbsorbers, EN353-2 - guided type fall arresters, EN360 - retractable fall arresters, EN358 - work positioning systems).
6. Before each use, the free space required beneath the user at the workplace should be verified, so that, in the case of a fall, there will be no collision with the ground or the other obstacle in the fall path.
7. The anchor post shall not be used for any purpose other than described in this manual or outside its load and usage pointed in EN795 class A1 standard. Any speciall applications must be agreed with producer or authorised representatives.
8. Any combination of protective equipment which may generate any dangers should be eliminated.
9. This HL709 anchor post must be installed excusively by qualified person who have enough konwledge and experience in this subject. In particular such a person should know the EN795 standard, the bolts or anchors manufacturer's guidelines concerning assemblies and this manual. The assembled anchor post should be checked (approved) by a person authorised to check (e.g. engineer or qualified designer).
10. The person who assembles the anchor point takes full responsibility for the assembly. Neither the manufacturer nor the distributor are responsible for an assembly that is careless and incompilant with the guidelines. On request, the manufacturer and/or distributor deliver all the necessary technical information concerning the product, the technology of its assembly, the way of checking it and the product certificate of compliance.
11. As far as possible, the anchor point for personal equipment (located on the post top) should be placed on such placed on such a level, with respect to the user's location, which reduces the potencial fall distance.
12. The environmental conditions existent in place of installation, having an effect on corrosion of the anchor point and/or attachments, should be taken into account.
13. If the product is re-sold outside the original country of destination this instruction should be provided in the language of the country in which the product is to be used.

OPERATION

1. Before and during use any necessary rescue actions should be planned.
2. Before each use a visual inspection should be carried out to ensure that the anchor point is in good condition and works correctly.
3. The usage of anchor point with any fault (such as: corrosion, cracks or deformation) is prohibited.
4. The usage of anchor point which was engaged to arrest of a fall is prohibited. Such a device should be replaced or inspected by qualified engineer.
5. PPE should be fastend dirctely to the anchor point of the BANANA post by a connector which is conformed with EN362 standard. Anchor point is in a shape of plate fastend right on the top of the post.
6. To make work safe one should use full body harness.
7. Anchoring to the HL709 anchor point more than one personal system or suspend any loads is prohibited.
8. Any modifications of the product are prohibited.
9. BANANA post should be kept in a dry and cool place. Any dirt should be removed with soft sponge. In case when the device became wet one should leve it so it can get dry naturally. Device must be kept out of direct heat.

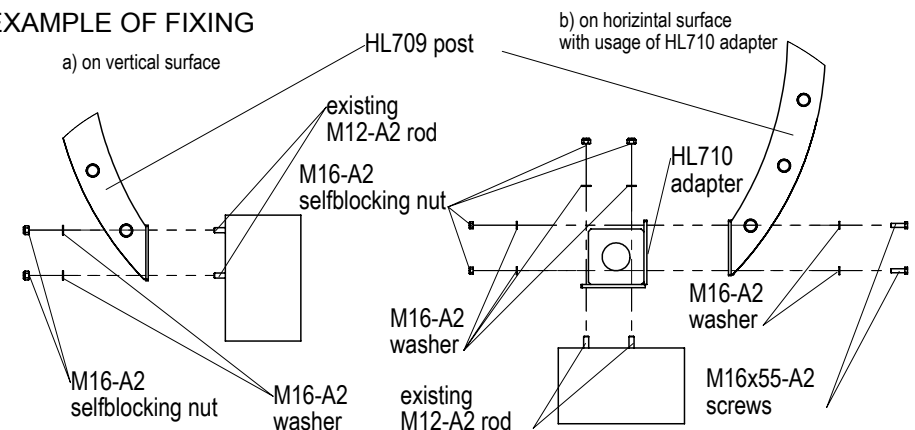
PROTEKT

ANCHOR POST HL 709-01, HL709-02, ADAPTER HL 710

INSTALLATION

1. Before installatiion the HL709 anchor post should be stored in a clean and dry place. The storage conditions should protect this against chemical or mechanical damages.
2. The HL709 anchor post can be fixed to vertical, horizontal or inclined surfaces. The strength of the structure should be assessed by qualified engeneer.
3. The installation should be carried out according to proper procedures and following the recommmendations of the producer of applied fastenings (bolts or anchors).
4. The connection to a steel base should be made with the use of screws of a minimum durability corresponding to the durability of screws M16-A2-70. Screws should be set through the four wholes in a post base (see beneath example of fixing). All the elements of the screw connection should be protected against corrosion or made from stainless steel materials. The nuts and hexagonal heads of the screws should be equipped with pads appropriate for thread M16. The nuts in screw connections should be self-braking or secured against self-unscrewing with locknuts. The bolts lengths should be appropriate to the thickness of the support structure.
5. The connection with the concrete base should be made with the use of chemical or mechanical anchors of the bolt M16. Anchors should be set through the four wholes in a post base (see beneath example of fixing). The concrete base should have a durability against pressure of at least 20MPa.
6. The base structure should have at least 15kN strenght.
7. The recomended material of the joint is stainless steel or other material which is appropriate for the aggressiveness of the environment in which the anchor point is applied.
8. Recommendations concerning installation specified in informative appendics A of the EN795 standard should be applied.
9. In case of fixing in other materials than mentioned above (e.g. wood), it is recomended that the skilled technician carries out a calculation to check that the connection meets the EN795 class-A1 requirements.

EXAMPLE OF FIXING



PROTEKT