

Reference
number:

TRYxxx

READ CAREFULLY BEFORE
USE THE EQUIPMENT

DESCRIPTION

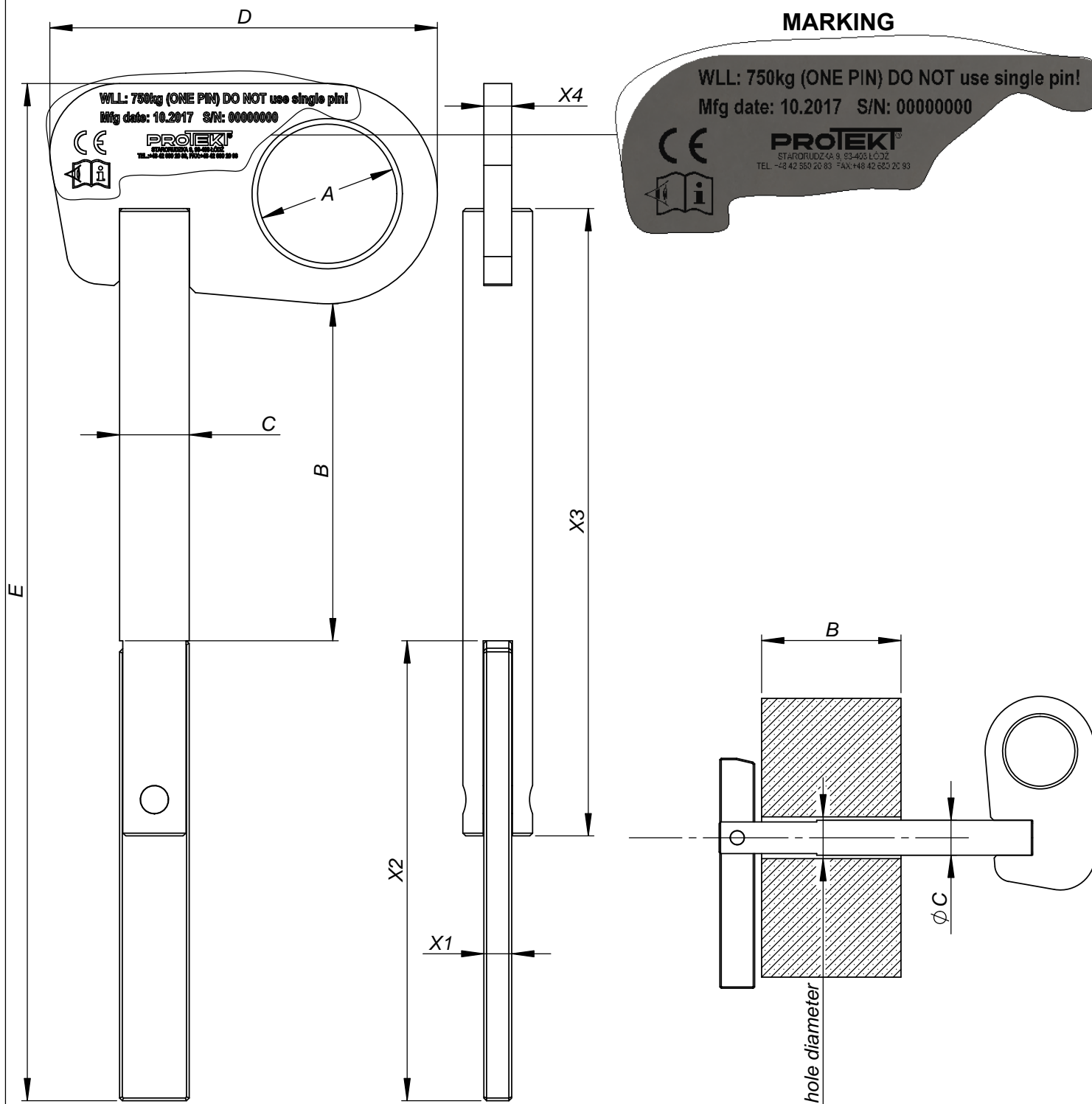
TRY series lifting pin can be used for fast and easy lifting concrete well rings (manhole chambers).

The unique quick-release feature enables the ground workers to complete the installation without additional tools (no parts which can be lost (nuts, bolts)).

Lifting pins are made of zinc plated steel.

CAUTION: Do not use single lifting pin. Avoid dynamic load - WLL can be greatly exceeded.

Lifting pins can be used in sets of three or four for any manhole chambers.

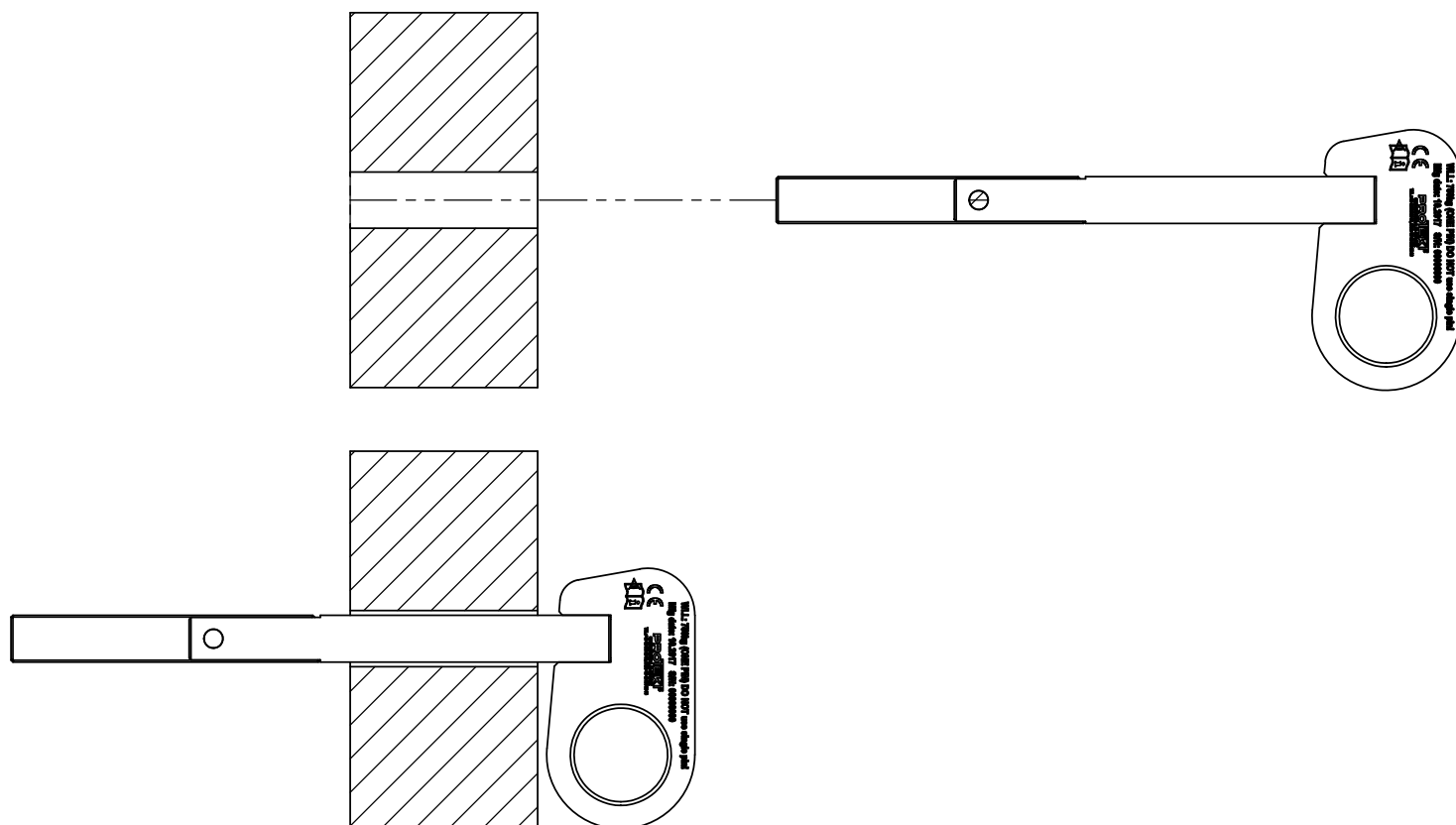


SPECIFICATION

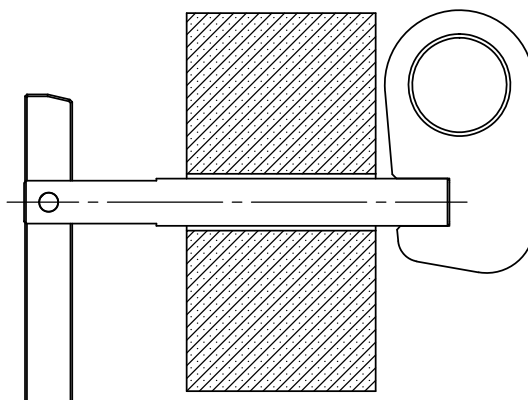
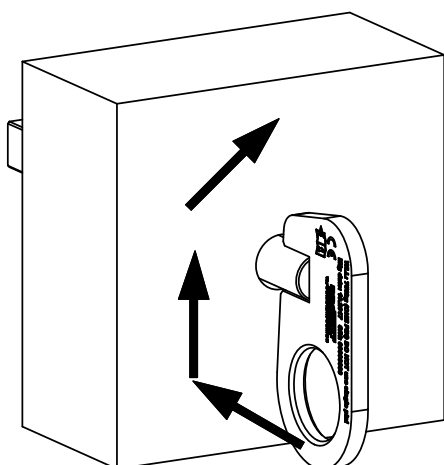
Reference	WLL [kg]	A [mm]	B [mm]	C [mm]	D [mm]	E [mm]	X1 [mm]	X2 [mm]	X3 [mm]	X4 [mm]
TRY075	750	50	120	25	139	365	10	165	225	10
TRY100	1000	50	150	32	139	400	10	165	260	10
TRY150	1500	50	175	35	155	425	10	165	285	12
TRY200	2000	50	215	40	155	465	10	165	325	15

INSTALLATION PROCEDURE

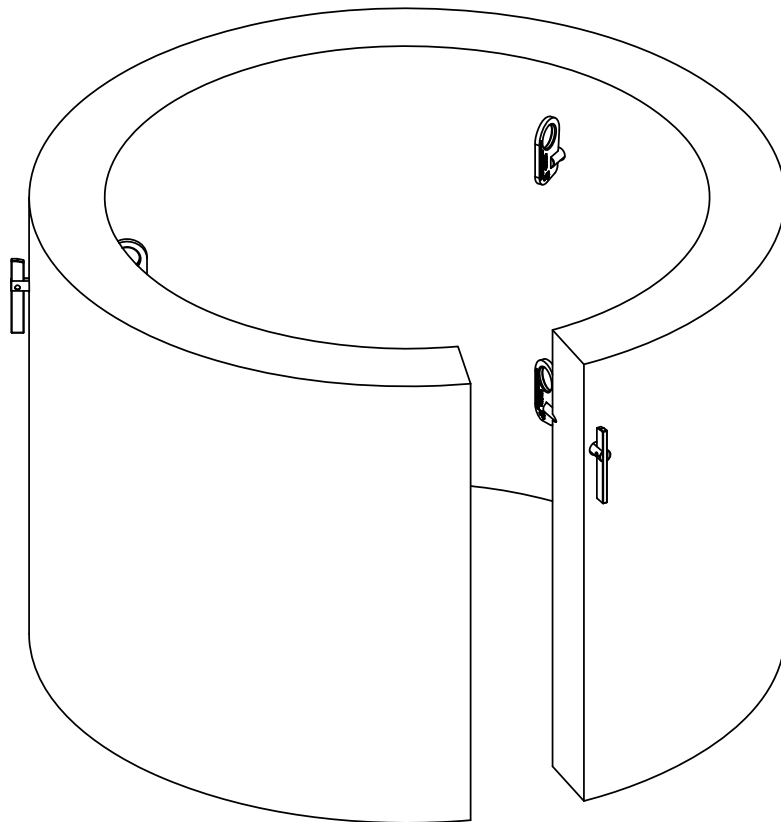
1. Drill bigger hole in concrete well according to the lifting pin diameter "C".
2. Insert pin to the hole.



3. Rotate lifting pin 180°. Pawl should be locked.



WARNING!
DO NOT USE SINGLE PIN!
USE MINIMUM THREE PINS!



LOAD CARRYING CAPACITY

Maximum load capacity of single TRY pin depends on size (from 750kg up to 2000kg - please refer to table on the first page of [this manual](#)).

TRANSPORT

Device should be transported in packaging protecting it from damage or getting wet, e.g. bags made of impregnated fabric or in steel / plastic / waterproof wooden cases or boxes.

MAINTENANCE AND STORAGE

When using this device, protect it against mechanical, chemical and thermal damage. Do not use a damaged or malfunctioning device. Clean a dirty device with a damp cloth. Store the device indoors, away from moisture and sources of heat.

THE ESSENTIAL SAFETY RULES AND ESSENTIAL PRINCIPLES OF USE

- TRY lifting pin is used for lifting and lowering loads (concrete wells). Working load limit depends on TRY lifting pin size (from 750kg up to 2000kg).
- This is not an emergency device for lifting people and it should not be used for this purpose.
- Do not use device contrary to its intended use.
- Do not lift loads over an area occupied by people.
- Do not change the device design, repair or replaceable elements included in the kit.
- Before each use of the device, carry out thorough inspection to check the tripod's condition and proper operation. Carefully check all elements of the device, paying particular attention to any damage, excessive wear, corrosion, abrasion, cuts and malfunction.
- Device must be immediately withdrawn from use if there is any doubt about the condition of the device or its operation. The device may be readmitted for use only after a manufacturer's detailed inspection, and manufacturer's written consent for its use.
- Check the stability of the load attached to the cable, on which it is hoisted, to prevent accidental detachment of any of the elements.
- The use of this device with other devices (such as devices for lifting and lowering loads) must be in accordance with the instruction for use of these devices.
- It is forbidden to use the kits in which the TRY lifting pin is included, in which the operation of any component disrupts the operation of other components.
- In case of any doubts as to the condition and usage of the TRY lifting pin, please contact the manufacturer of the device.

GENERAL PRECAUTIONS FOR TRY LIFTING PIN

- CAUTION: Do not use single lifting pin. Avoid dynamic load - WLL can be greatly exceeded.
- Lifting pins can be used in sets of three or four for any manhole chambers.
- Avoid working where user may swing and hit an object or where lines may cross or tangle with that of another worker in the area.

NOTES

IDENTITY CARD

IT IS RESPONSIBILITY OF THE USER ORGANISATION TO PROVIDE THE IDENTITY CARD AND TO FILL IN THE DETAILS REQUIRED. THE IDENTITY CARD SHOULD BE FILLED IN ONLY BY COMPETENT PERSON RESPONSIBLE FOR PROTECTIVE EQUIPMENT. THE IDENTITY CARD SHOULD BE FILLED IN BEFORE THE FIRST USE OF THE EQUIPMENT. ANY INFORMATION ABOUT THE EQUIPMENT LIKE: PERIODIC INSPECTIONS, REPAIRS, REASONS OF EQUIPMENT'S WITHDRAWN FROM USE SHALL BE NOTED. THE IDENTITY CARD SHOULD BE STORED DURING A WHOLE PERIOD OF EQUIPMENT UTILIZATION. DO NOT USE THE EQUIPMENT WITHOUT THE IDENTITY CARD.

MODEL AND TYPE OF EQUIPMENT	
------------------------------------	--

REF. NUMBER	
--------------------	--

SERIAL NUMBER	
----------------------	--

DATE OF MANUFACTURE	
----------------------------	--

DATE OF PURCHASE	
-------------------------	--

DATE OF FIRST USE	
--------------------------	--

USER NAME	
------------------	--

PERIODIC EXAMINATION AND REPAIR HISTORY

	DATE	REASON FOR SERVICING / REPAIR	REPAIRS CARRIED OUT	NAME AND SIGNATURE OF COMPETENT PERSON	DATE OF NEXT EXAMINATION
1					
2					
3					
4					
5					
6					
7					
8					
9					

PRODUCER:

PROTEKT, 93-403 LODZ, ul. Starorudzka 9, POLAND, tel: +48 (42) 680 20 83, fax: +48 (42) 680 20 93, www.protekt.com.pl