



PROTEKT®

AT 189

NEW

Ground anchorage point



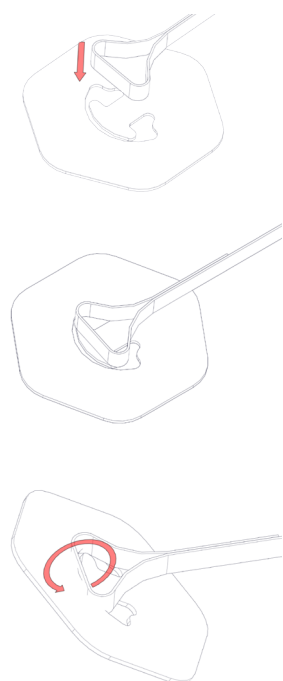
Made
in Poland

EN795: 2012 typ A

**STATIC
STRENGTH**

12 kN

**REPLACEABLE
POLYESTER TAPE**



**STABLE SECURITY
FOR 1 PERSON**



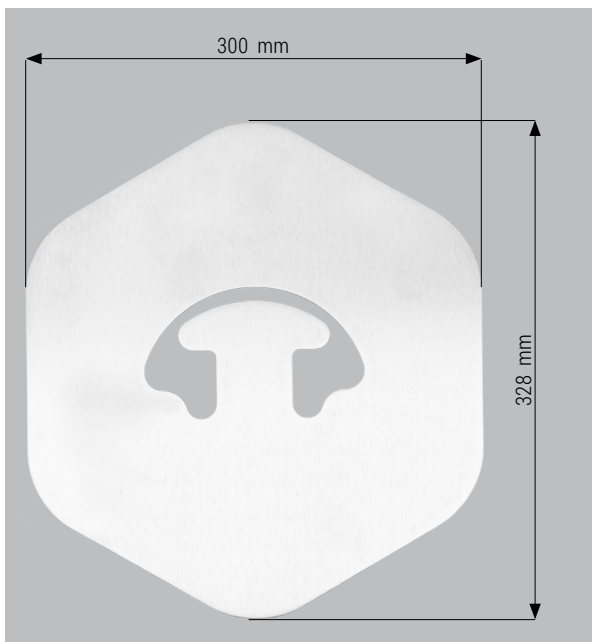
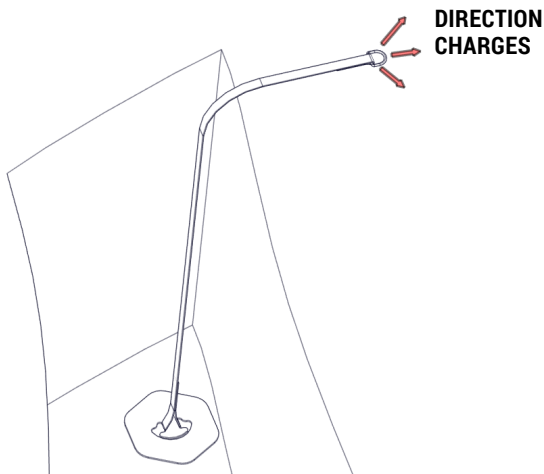
PROTEKT®

OFFICE - Skromna 6, 93-405 Lodz, POLAND / CORRESPONDENCE ADDRESS - PROTEKT, Starorudzka 9, 93-403 Lodz, POLAND
SALES DEPARTMENT Phone +48 42 29-29-500, export@protekt.com.pl, fax +48 42 680-20-93

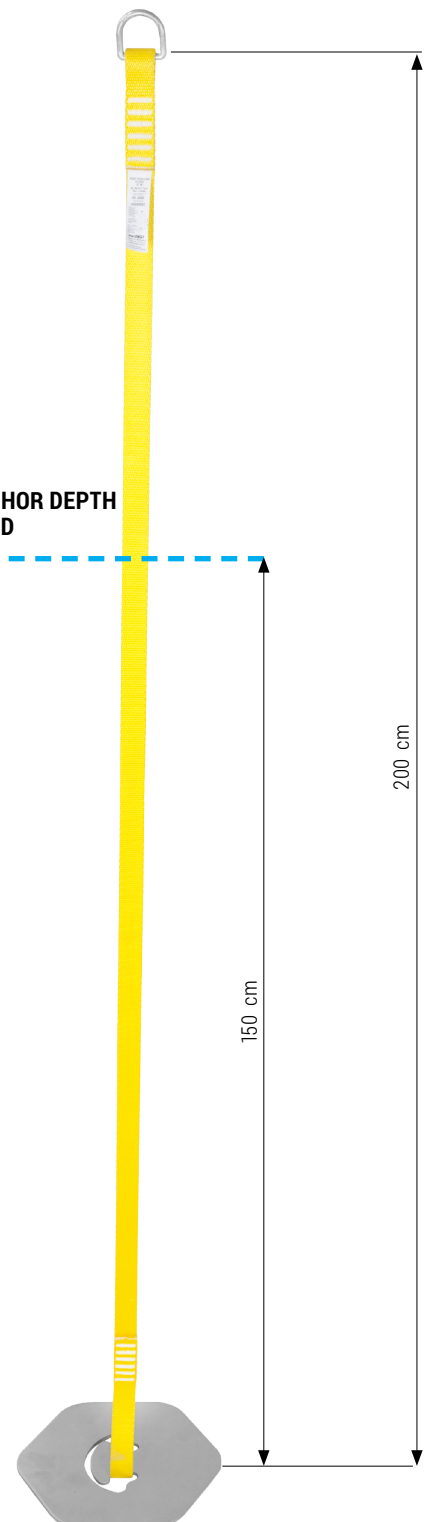
WAREHOUSE - Gombrowicza 6, 93-405 Lodz, POLAND

Ground anchorage point AT 189

NEW



MINIMUM ANCHOR DEPTH
IN THE GROUND
1.5 M



Anchor point AT165A is an anchor device type A in accordance with EN 795 and serves to protect up to 1 person. It can only be used as personal protective equipment to protect workers against falling from height and cannot be used to lift loads. The device is made of a steel plate and plastic belt clip. The strength of this point is at min. 12 kN.

PARAMETERS

MATERIAL:	Replaceable tape 35 mm – polyester Stop plate – stainless steel
DIMENSIONS:	Stop plate – 328 x 300 x 6 mm The length of the tape – 200 cm
WEIGHT:	Stop plate – 3,360 g The whole device – 3,800 g
STATIC STRENGTH:	12 kN

PROTEKT

OFFICE - Skromna 6, 93-405 Lodz, POLAND / **CORRESPONDENCE ADDRESS** - PROTEKT, Starorudzka 9, 93-403 Lodz, POLAND
SALES DEPARTMENT Phone +48 42 29-29-500, export@protekt.com.pl, fax +48 42 680-20-93
WAREHOUSE - Gombrowicza 6, 93-405 Lodz, POLAND

Ground anchorage point AT 189

NEW

INSTALLATION VERIFICATION



After installation, verify that the point is properly seated in the ground. In order to do this, use a CMU006 test plate with 6N strength (600kg +/- 50kg), snap fastener or shackle with minimum strength of 12KN, a belt or rope sling with minimum strength of 1T.

The test should be documented by noting the serial number of the test plate on the test report and taking the picture.

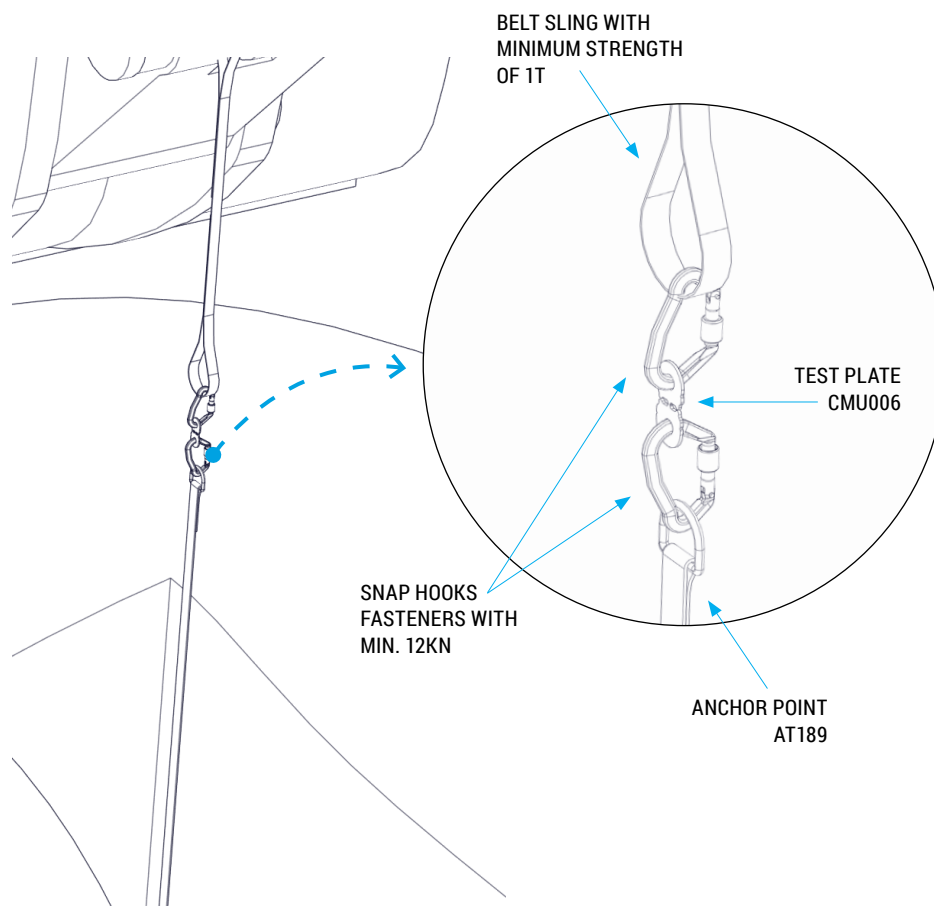
Procedure:

- Connect the test system in the following way: connect the snap fastener to the point of the AT189 above the ground, attach the test plate to the snap fastener (any direction), attach 2 snap fasteners to the other eye, attach the sling to it. Secure the sling safely to the excavator bucket (you can use another device that will produce a minimum 7KN).
- Go away to a safe distance.
- Start pulling vertically up.

If the test plate breaks and the AT189 does not slide more than 20 cm from the ground, the point is firmly fixed. Keep the plate as a proof of testing until the end of work here. If the AT189 slides more than 20 cm from the ground and the test plate does not break, then the installation is not correct.

Reasons: the installation did not run correctly, the plate was not horizontal at the bottom of the excavation, or the compaction was insufficient. It may also turn out the ground prevents the AT189 from being installed. In this case, consult the manufacturer for a solution.

PLAN HOW TO PERFORM THE ANCHORAGE TEST



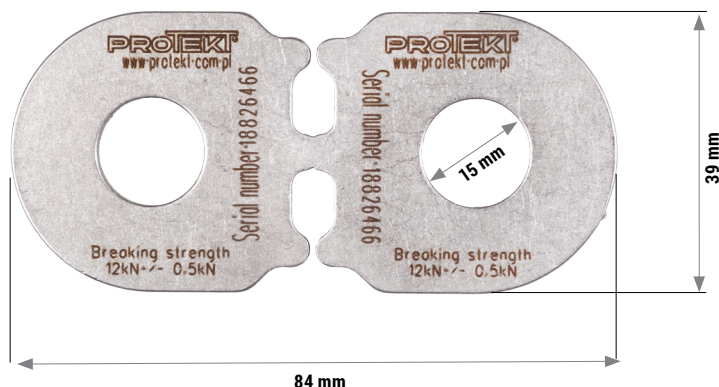
Test plates CMU to perform the anchorage test

CMU 006

NEW



TEST PLATES CMU 006 (84 mm x 39 mm) - 6 kN

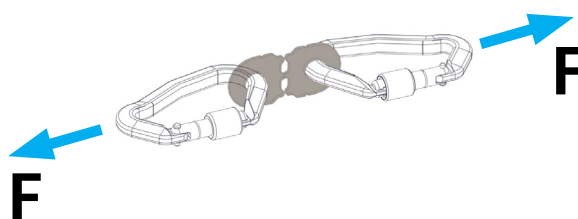


CMU test plates are devices used for quick assessment of the strength of connection of belay points, points of construction, etc. CMU test plates are a method for estimating the correctness and compliance with the EN795 : 2012 standard for the bearing capacity of a belay point associated with the ground of unknown parameters.

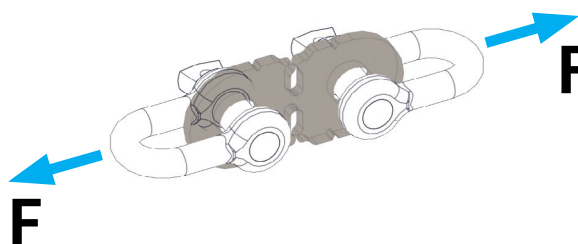
CMU PLATE AFTER THE TEST



EXAMPLES OF A TEST USING CMU PLATES



Test system with connectors according to EN362.



Test system with in the of a shackle.



PROTEKT

OFFICE - Skromna 6, 93-405 Lodz, POLAND / CORRESPONDENCE ADDRESS - PROTEKT, Starorudzka 9, 93-403 Lodz, POLAND
SALES DEPARTMENT Phone +48 42 29-29-500, export@protekt.com.pl, fax +48 42 680-20-93
WAREHOUSE - Gombrowicza 6, 93-405 Lodz, POLAND